



COSTA NOVA
PORTUGAL



BUFFET STORIES

Crafting innovative dining experiences

COSTA NOVA

Buffets around the world

COSTA NOVA is a world-leading manufacturer of innovative and sustainable tabletop solutions for the hospitality industry.

Renowned for its unique glazing techniques, designs, and organic shapes, COSTA NOVA offers sustainably crafted items that stand out. The brand adapts its offerings to suit any hospitality environment, adding a distinctive touch to every setting.

Buffets are increasingly popular, requiring versatile and elegant products while maintaining practicality. COSTA NOVA provides caterers with perfect solutions for any buffet need.



Top to bottom: Fontana glass drink dispenser w/ stand 1000 cl | 338 fl oz in white with Storia tumbler 33 cl | 11 fl oz. Beja deep round plate 21 cm | 8", bowl 14 cm | 6" and bowl 9 cm | 4" in white & cream.

WHAT MAKES US DIFFERENT

CHIP RESISTANCE AND METAL MARKING

COSTA NOVA presents collections with very good resistance to chipping and metal marking, suitable for busy environments.

USE OF COLOR

COSTA NOVA is known for creating unique finishes, from the purest white to the most striking reactive glazes. All the different results are obtained with the same single-firing system.

COMPLEMENTARY PIECES

In addition to all the basic pieces for a table setting, COSTA NOVA offers complementary pieces such as teapots, creamers, sugar bowls, appetizer plates, ramekins, butter dishes and many more.

STOCK

As we manufacture our own products, we control our stock and have great delivery times.

PRICE

We offer a wide range of quality and sustainable products with good value for money.

DIFFERENT GASTRONOMIC SCENARIOS

Designed for unique and eye-catching gastronomic presentations, our collections offer different solutions for every style or dining experience.

This presentation is intended for internal and commercial use only. Some photos shared in this document were extracted from social media and are designed to serve only as examples, not for printing or widespread distribution. Full credits are disclosed on the following pages.

BREAKFAST BUFFET

Our catalog includes a variety of items that are perfect for breakfast buffets. COSTA NOVA's high-quality products are designed to enhance the presentation and functionality of the breakfast service, making them an excellent choice for restaurants, hotels, and B&Bs.



Quinta da Ermida's existence dates back to the 15th century. This beautiful setting provided the perfect backdrop for showcasing our buffet proposition.



1. Friso serving bowl 24 cm | 10" in white. 2. Pearl round plate 28 cm | 11" in white. 3. Nótos square serving plate 31 cm | 12" in dune path. 4. Friso tray 25 cm | 10" in white. 5. Roda rect. tray 28 cm | 11" in branca. 6. Nótos oval tray 35 cm | 14" in dune path. 7. Arenito lungo cup 20 cl | 7 fl oz in mauve rose. 8. Arenito espresso cup 7 cl | 2 fl oz in mauve rose. 9. Nova tumbler 37 cl | 13 fl oz. 10. Nova tumbler 22 cl | 8 fl oz. 11. Boutique low metallic riser 20 cm | 8". 12. Plano oak wood cutting/serving board w/ handle 60 cm | 24".

Meet some inviting and efficient buffet offers, selected to meet the diverse tastes and dietary needs of your guests:



Above, left to right: Pacifica footed plate 28 cm | 11" in artichoke with Arcade glass dome 25 cm | 10". Boutique rect. tray 36 cm | 14" in mountain black with high and low metallic riser 28 cm | 11", and round plate 34 cm | 13" in constellation black with high metallic riser 20 cm | 8".

Opposite page, top to bottom: Boutique rect. tray 36 cm | 14" in mountain black with low metallic riser 28 cm | 11" and footed plate 28 cm | 11", Roda oval plate/platter 34 cm | 13", oval plate/platter 28 cm | 11", bowl 10 cm | 4" and mini square plate 9 cm | 4" in branca, and Nótos round plate 8 cm | 3" in dune path. Lagoa coffee cup and saucer 9 cl | 3 fl oz in pedra. Coastland rect. plate/tray 28 cm | 11" in shoreline grey with oak wood board/tray 28 cm | 11", and rect. tray 20 cm | 8" in shoreline grey with oak wood board/tray 20 cm | 8".



DRAMA AND SOPHISTICATION DURING BREAKFAST



1.



2.



3.



4.



5.



6.



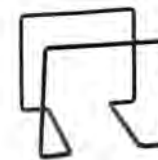
7.



8.



9.



10.



11.



12.

1. Nótos round plate 30 cm | 12" in latitude black. 2. Riviera alchemille leaf 18 cm | 7" in forêts. 3. Boutique footed plate 28 cm | 11" in black moon. 4. Roda oval plate/platter 28 cm | 11" in iris. 5. Nótos oval tray 25 cm | 10" in latitude black. 6. Roda 3-section rect. tray 18 cm | 7" in ardosis. 7. Livia oval baker 31 cm | 12" in matte black. 8. Boutique olives canister 68 cl | 23 fl oz in mountain black. 9. Boutique honey jar 52 cl | 18 fl oz in mountain black. 10. Boutique high metallic riser 20 cm | 8". 11. Nótos square metallic riser 15 cm | 6". 12. Coupole glass dome 25 cm | 10".

CHEESE BUFFET

A well-curated cheese buffet not only enhances the aesthetic appeal of the breakfast setting but also caters to diverse palates, making it a standout feature in any hospitality establishment.



1.



2.



3.



4.



5.



6.



7.



8.

1. Friso tray 30 cm | 12" in white. 2. Roda rect. tray 28 cm | 11" in branca. 3. Roda rect. tray 19 cm | 7" in branca. 4. Livia oval bowl 10 cm | 4" in white. 5. Aparte dip dish 7 cm | 3" in white. 6. Plano oak wood cutting/serving board w/ handle 60 cm | 24". 7. Plano oak wood cutting/serving board w/ handle 50 cm | 17". 8. Plano oak wood round cutting/serving board w/ handle 40 cm | 16".





Opposite page: Plano oak wood round cutting/serving board w/ handle 40 cm | 16".

Above, top to bottom: Sardegna rect. tray 37 cm | 15" in white. Aparte round board 21 cm | 8" in white. Boutique low metallic riser 28 cm | 11". Coastland oak wood lid/pillow plate 16 cm | 6". Pearl rect. platter 40 cm | 16", rect. tray 30 cm | 12" and round plate 17 cm | 7" in white. Plano oak wood round cutting/serving board w/ handle 40 cm | 16".



THE PERFECT BRUNCH WITH PEARL AND FRISO... AT QUINTA DA COMPORTA

1. Pearl round plate 28 cm | 11" in white. 2. Pearl round plate 22 cm | 9" in white. 3. Pearl round plate 17 cm | 7" in white. 4. Pearl bowl 15 cm | 6" in white. 5. Pearl tea cup and saucer 25 cl | 9 fl oz in white. 6. Friso sugar bowl 50 cl | 17 fl oz in white.

LUNCH AND DINNER BUFFET

At COSTA NOVA, we offer a variety of items designed to enhance your lunch and dinner buffet displays. Our collection includes elegant and durable tableware that showcases your culinary creations beautifully and withstands the demands of high-traffic buffet settings.

Whether you're aiming for a rustic charm or a modern, sophisticated look, our pieces are sustainably crafted to elevate the dining experience and leave a lasting impression on your guests.



As seen at RITZ FOUR SEASONS in LISBON...



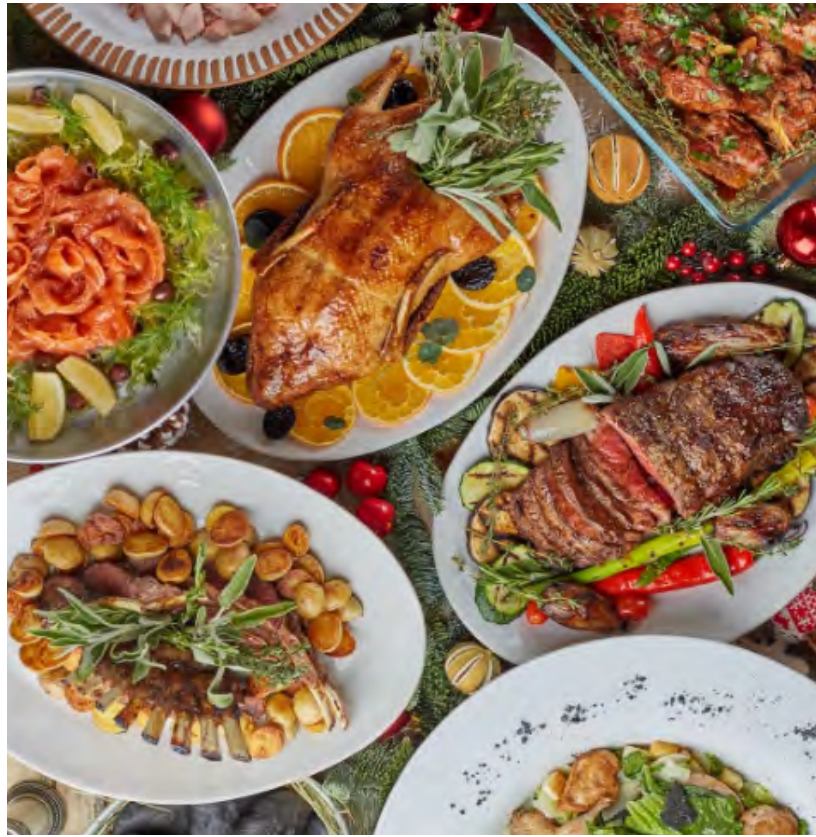
Ritz Four Seasons surprises its guests with luxurious buffet setups, where COSTA NOVA's Nótos and Aparte collection large presentation items take center stage.

From larger items to small items that complement any buffet setting...



Opposite page: Aparte tray 31 cm | 12" in white. Nótos oval platter 37 cm | 14" in latitude black.

Above, top to bottom: Livia oval platter 41 cm | 16" in matte black and oval platter 33 cm | 13" in white. Marrakesh leaf plate 53 cm | 21" in eucalyptus. Nótos oval platter 37 cm | 14", oval tray 19 cm | 7", deep oval tray 25 cm | 10", bowl 9 cm | 4", and low dip dish 7 cm | 3" in latitude black with Roda round plate 31 cm | 12" in ardosa, bowl 10 cm | 4" in black, and dip bowl 7 cm | 3" in ardosa and iris. Nova tiered stand w/ two trays 37 cm | 15" in white.



The Ginza Project* selected NOVA platters to highlight its colorful and delightful buffets.



1.



2.



3.

1. Friso oval platter 41 cm | 16" in white. 2. Nova oval platter 29 cm | 11" in white. 3. Cristal round platter 39 cm | 15".

*Ginza Project is an international restaurant group, owning and managing more than a hundred restaurants in St. Petersburg, Moscow, New York and London.



At the UNISCO, a beautiful restaurant located in Santo Tirso (Portugal), Pearl and Friso mix for the perfect buffet presentation.



Sublime Comporta in Portugal surprises its guests with a blend of flavors inspired by Portuguese gastronomy and a mix of serving items, where stoneware and wood combine in a perfectly curated buffet presentation.

DESSERT BUFFET

Who can resist dessert? Dessert buffets are always a guest's favorite destination when dining at a buffet restaurant or staying at a hotel.

At Costa Nova we offer a large variety of serving items – from cake stands to bowls and serving plates and platters.



Unisco Restaurant has created the perfect (and most irresistible) setting with Pearl, Riviera, and a selection of beautiful cake stands with different designs.



1.



2.



3.

1. Lisa footed plate 28 cm | 11" in white. 2. Pearl serving bowl 34 cm | 13" in white. 3. Riviera oval plate 15 cm | 6" in forêts.

Opposite page: Brisa low bowl 23 cm | 9", bowl 16 cm | 6" and oval bowl 15 cm | 6" in ria blue, and round plate 28 cm | 11" in sal.

SMALL BUFFET... at the TABLE

Sharing food at the table is becoming increasingly popular each day, with small buffets displaying food meant to celebrate moments together.

As seen in Point Seven:



YOUR ECO-CONSCIOUS CHOICE, OUR SUSTAINABILITY MISSION:

COSTA NOVA's ecogres collections take sustainability to its highest level, telling a unique story of how tableware can be made of recycled materials while remaining beautiful, durable and functional at the same time. By choosing our ecogres collections, hotels and restaurants all over the World are taking part in our commitment to protect the environment.



1.



2.



3.



4.



5.



6.



7.



8.

1. Âmbar oval plate/platter 37 cm | 15" in salt of the sea. 2. Plano rect. tray 37 cm | 15" in white. 3. Lagoa Ecogres rect. tray 19 cm | 7". 4. Coastland rect. plate/platter 28 cm | 11" in salt of the sea. 5. Coastland rect. tray 20 cm | 8" in salt of the sea. 6. Marrakesh leaf plate 53 cm | 21". 7. Marrakesh leaf plate 27 cm | 11". 8. Marrakesh serving bowl 26 cm | 10".

Opposite page: Riviera hydrangea leaf 22 cm | 9" and dip dish leaf 11 cm | 4" in tomato, Roda round plate 16 cm | 6" in black and Oak Wood cutting/serving board 54 cm | 21".



IN-ROOM DINING

Guests often choose to have their meals in the comfort and privacy of their rooms. Recognizing this preference, many hotels now offer premium in-room service. At COSTA NOVA we cater to this trend by providing a diverse range of items that are perfect for enjoying meals in the room.

Our collection includes beautifully designed tableware, versatile serving dishes, covered solutions, and elegant drinkware, all crafted to enhance the in-room dining experience.

Whether it's a cozy breakfast in bed or a sophisticated dinner setup, COSTA NOVA's products ensure that every meal feels special and memorable.



Breakfast with Friso at Casas de São Lourenço, in Portugal.

Friso dip bowl 7 cm | 3" and tea cup and saucer 26 cl | 9 fl oz in white.



A lovely BRUNCH with Lagoa, Nótos, Riviera, Lisa and Alegra glassware at the bedroom balcony at Casas de São Lourenço.



Eating alone is not synonymous with loneliness... At Casas de São Lourenço, a lunch with a view is complemented with our Lagoa plates.

Above, left to right: Lagoa round plate 31 cm | 12" in pedra, Lisa oval platter 29 cm | 11" in white, Riviera alchemille leaf 18 cm | 7" in forêts, and Nótos round plate 28 cm | 11", bowl 16 cm | 6" and dip bowl 9 cm | 4" in dune path. Lagoa low bowl 24 cm | 9" in metal.



1. 2. 3.



4. 5. 6.



7. 8. 9.



10. 11. 12.

1. Alentejo square tray 21 cm l 8" in white. 2. Beja rect. tray 29 cm l 12" in white & cream. 3. Madeira rect. tray 27 cm l 11" in cream. 4. Impressions round plate 23 cm l 9" in white. 5. Mallorca round plate 22 cm l 9" in sand beige. 6. Cristal round plate 22 cm l 9" in nacar. 7. Brisa oval plate 20 cm l 8" in sal. 8. Riviera oval plate 15 cm l 6" in forêts. 9. Livia oval plate 15 cm l 6" in champagne. 10. Brisa oval bowl 15 cm l 6" in ria blue. 11. Nova square bowl 11 cm l 4" in white. 12. Aparte shell bowl 11 cm l 4" in white.

COVERED IN-ROOM PRODUCT SUGGESTIONS:



BENTO BOXES



Bowl 16 cm | 6" + Round plate 17 cm | 7"
NSS161-LTB + NLP171-LTB

Bowl 14 cm | 6" + Round plate 15 cm | 6"
NSS141-LTB + NLP151-LTB

Bowl 12 cm | 5" + Round plate 13 cm | 5"
NSS121-LTB + NLP131-LTB

Dip dish 7 cm | 3" + Round plate 8 cm | 3"
NSN072-LTB + NLD081-LTB



Deep oval tray 25 cm | 10" + Oval tray 25 cm | 10"
NSA251-LTB + NSA252-LTB

Deep oval tray 19 cm | 7" + Oval tray 19 cm | 7"
NSA181-LTB + NSA182-LTB

CORK INLAYS



O30155-SMK

COMBINE THE CORK OVAL
INLAY 24 CM | 9" WITH:

- Stoneware**
Oval tray 35 cm | 14" NSA351-DNP
Oval tray 25 cm | 10" NSA252-DNP
Deep oval tray 25 cm | 10" NSA251-DNP



O30154-SMK

COMBINE THE CORK OVAL
INLAY 17 CM | 7" WITH:

- Stoneware**
Oval tray 35 cm | 14" NSA351-LTB
Oval tray 25 cm | 10" NSA252-LTB
Deep oval tray 25 cm | 10" NSA251-LTB
Oval tray 19 cm | 7" NSA182-LTB
Deep oval tray 19 cm | 7" NSA181-LTB



RTQ091-BRA
RTN091-BRA



COMBINE THE MINI SQUARE PLATE 9 CM | 4" WITH:
Square bowl 9 cm | 4"

RTR191-ARD
RTR182-ARD



COMBINE THE RECT. TRAY 19 CM | 7" WITH:
Deep rect. tray 18 cm | 7"

RTR283-BRA
RTR271-BRA



COMBINE THE RECT. TRAY 28 CM | 11" WITH:
Deep rect. tray 27 cm | 11"

RTR371-BRA
RTR361-BRA



COMBINE THE RECT. TRAY 37 CM | 15" WITH:
Deep rect. tray 37 cm | 14"

DISPLAY SOLUTIONS

Our on-trend buffet display includes stands and risers, presentation platters, and cork and wood trays and boards, all designed to complement our stoneware items and provide your space with a unique style.



Desserts buffet at the table with Nótos at Galvin at Windows, in London.

Nótos deep oval tray 19 cm | 7", oval tray 25 cm | 10" and 19 cm | 7" in latitude black with square metallic riser 15 cm | 6".

RISERS



1.



2.



3.



4.



5.

***New for 2025**

For orders, contact your market manager.

1. Boutique high metallic riser 28 cm | 11" in gold. 2. Boutique high metallic riser 20 cm | 8" in gold. 3. Boutique low metallic riser 20 cm | 8" in gold. 4. Stacked Organic high round metallic riser 24 cm | 9" in gold. 5. Stacked Organic low round metallic riser 24 cm | 9" in gold.



Above: Marrakesh 3 appetizer plate holder, dip bowl 10 cm | 4" in eucalyptus, and round plate 19 cm | 7" in cumin, cannelle and eucalyptus.

Opposite page: Tiered stand w/ two trays 37 cm | 15", round plate 29 cm | 11", round plate 23 cm | 9", and bowl 18 cm | 7" in white.



OTHER DISPLAY ITEMS

COSTA NOVA offers a curated selection of cork and wood items that perfectly complement our stoneware pieces, adding a surprising touch to your buffet presentation.



1.



2.



3.



4.



5.



6.



7.

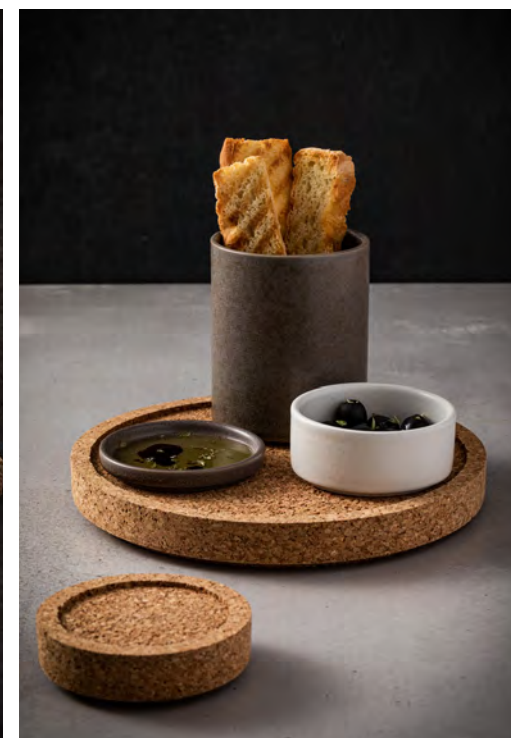


8.



9.

1. Nótos wooden tray 25 cm | 10". 2. Redonda deep round plate 29 cm | 12" in oak with cork lid/trivet 30 cm | 12". 3. Redonda bowl 13 cm | 5" in white with cork lid/trivet 14 cm | 5". 4. Coastland rect. tray 28 cm | 11" in shoreline grey and oak wood board/tray 28 cm | 11". 5. Coastland rect. tray 20 cm | 8" in salt of the sea and oak wood board/tray 20 cm | 8". 6. Oak wood cutting/serving board w/ handle 42 cm | 7". 7. Ámbar oval plate/platter 37 cm | 15" in sage green. 8. Ámbar 3-section rect. tray 28 cm | 11" in salt of the sea. 9. Ámbar sq. plate/tray 27 cm | 11" in dark caramel.



EVENTS

WEDDING



At COSTA NOVA, we believe that every wedding should be a unique and unforgettable experience. Our exquisite tableware and accessories provide the perfect touch of elegance and sophistication, helping to create a memorable setting for your special day.

Elegant Tableware

Our beautifully crafted stoneware collections, such as the timeless Pearl or the charming Riviera, offer a stunning variety of plates, bowls, and serving dishes that are perfect for any wedding theme. Each piece is designed with meticulous attention to detail, ensuring that your tables look nothing short of spectacular.



PARTY RENTAL SUGGESTIONS:

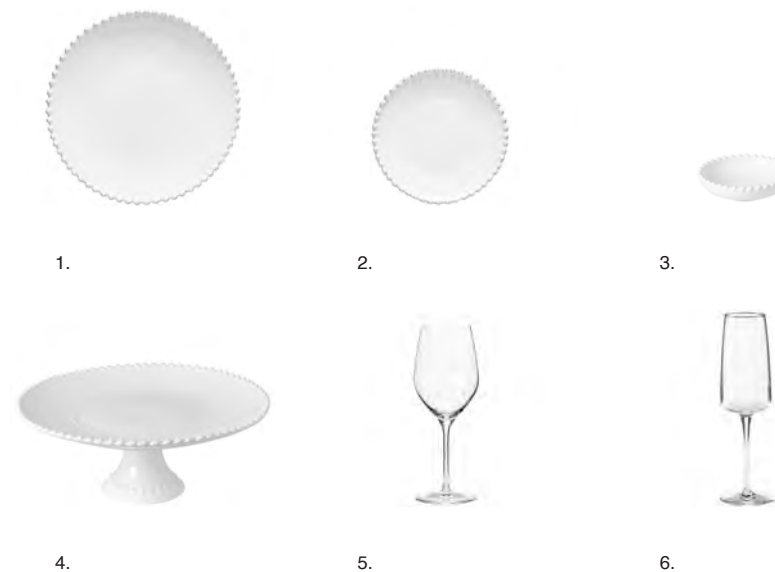


Personalized Buffets and Displays

For a wedding buffet, a beverage station or a dessert table, our n-trend buffet display items, including stands and risers, plates, glassware, presentation platters, and cork and wood trays and boards, create a visually stunning presentation.



WEDDING BUFFET MUST-HAVES:



1. Pearl round plate 28 cm | 11" in white. 2. Pearl round plate 17 cm | 7" in white. 3. Pearl dip bowl 11 cm | 4" in white. 4. Pearl footed plate 34 cm | 13" in white. 5. Alice white wine glass 38 cl | 13 fl oz. 6. Vine flute 26 cl | 9 fl oz.

PRIVATE EVENTS

At COSTA NOVA, we understand that every private event is unique and special. Whether you're hosting an intimate dinner party or a milestone celebration, our exquisite tableware and accessories will add a touch of elegance and sophistication to your event.



Anniversaries



Special Days

PRIVATE EVENTS MUST-HAVES:



1.



2.



3.



4.



5.



6.

1. Cristal round platter 39 cm | 15" in nacar. 2. Riviera strelizia leaf 40 cm | 16" in tomate. 3. Aparte appetizer dish 41 cm | 16" in white. 4. Fontana glass drink dispenser w/ stand 1000 cl | 338 fl oz in white. 5. Pearl pitcher 258 cl | 87 fl oz in white. 6. Nova tumbler 50 cl | 17 fl oz.

CORPORATE EVENTS

Corporate events are an essential part of professional life, whether it's for celebrating achievements, building team spirit, or impressing clients. By incorporating COSTA NOVA into your corporate events, you ensure that every detail, from the table settings to the buffet displays, reflects the professionalism and significance of your gathering.

COFFEE-BREAKS



Our COSTA NOVA Showroom in Vagos, ready to welcome our guests.



1.



2.



3.



4.



5.



6.

1. Nova tiered stand w/ two trays 37 cm | 15" in white. 2. Nova footed plate 26 cm | 10" in white. 3. Aparte tray 31 cm | 12" in white. 4. Nova tea pot 107 cl | 36 fl oz in white. 5. Nova tea cup and saucer 19 cl | 7 fl oz in white. 6. Grespresso espresso cup 7 cl | 2 fl oz in white.



A suggestion at Quinta da Ermida.



1.



2.



3.



4.



5.



6.



7.



8.



9.



10.



11.



12.

1. Oak wood round cutting/serving board w/ handle 43 cm | 17". 2. Pearl rect. platter 30 cm | 12" in white. 3. Vermont oval plate/platter 28 cm | 11" in cream. 4. Sardegna rect. tray 37 cm | 15" in white. 5. Nótos oval tray 35 cm | 14" in dune path. 6. Lagoa rect. tray 19 cm | 7" in pedra. 7. Grespresso Nature lungo cup 19 cl | 7 fl oz in natural-white. 8. Grespresso Ecogres espresso cup 7 cl | 2 fl oz in colombia. 9. Arenito espresso cup 7 cl | 2 fl oz in champagne yellow. 10. Brisa pitcher 176 cl | 60 fl oz in ria blue. 11. Alegria glass caraf w/ cork stopper 100 cl | 34 fl oz. 12. Storia tumbler 33 cl | 11 fl oz.

OTHER CORPORATE EVENTS:





VISIT OUR WEBSITE



costanovaprofessional.com